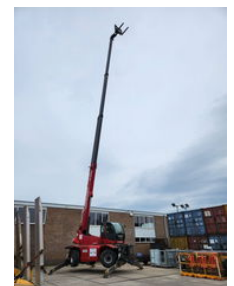


## Magni 5.25 Smart, 2016, 9539H, Remote, Airco, First owner

### General features

Brand	Magni
Subcategory	Rotating telehandler
Construction year	2016
Date of first registration	01-06-2016
Hourmeter reading	9539
Color	Red
Condition	Used
General condition	Very good
Fuel	Diesel
Emission class	stage_5
Reference	Magni 5.25.2016
CE marking	Yes



### Characteristics

Load capacity	5.000kg
Lifting capacity	5.000kg
Lifting height	25.000mm

# Magni 5.25 Smart, 2016, 9539H, Remote, Airco, First owner

## Technical specifications

Drive

wheels

## Description

Magni 5.25 Smart 2016 9536 Hours 5000kg 25 meter Camera Radiografic remote Airco 4x4 Engine 4 cilinder Deutz diesel First owner Always maintained very well Price ex. VAT TAX

## Accessories